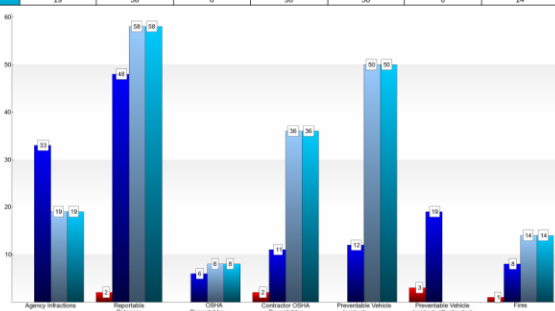


Reporting Information Management System

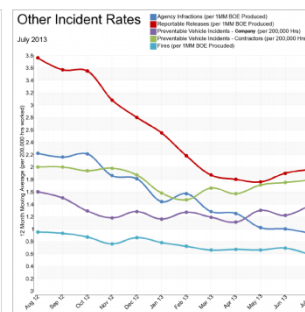
RIMS tracks the following incident types and more:

- Injury/Illness
- Vehicles
- Complaints
- Near Hits
- Fires
- Releases
- Damage / Theft
- Agency Interactions & Infractions

	Agency Infractions	Reportable Releases	OSHA Recordables	Contractor OSHA Recordables	Preventable Vehicle Incidents	Preventable Vehicle Incidents (Cont.)	Fires
Dec 2009	0	2	0	2	0	3	3
2009 YTD	33	48	6	11	12	19	8
2008 YTD	19	58	8	36	50	0	14
2008 YE	19	58	8	36	50	0	14



Company	Weeks Recorded (2013) (Not per 200,000 hrs)				Preventable Vehicle Incident Rate (per 200,000 hours)				Other Incident Rates (per 1 MM Hrs Produced)			
	11/13	12/13	1/14	2/14	11/13	12/13	1/14	2/14	11/13	12/13	1/14	2/14
Company A	1.2	1.5	1.8	2.1	0.5	0.6	0.7	0.8	1.0	1.1	1.2	1.3
Company B	1.5	1.8	2.1	2.4	0.6	0.7	0.8	0.9	1.1	1.2	1.3	1.4
Company C	1.8	2.1	2.4	2.7	0.7	0.8	0.9	1.0	1.2	1.3	1.4	1.5
Company D	2.1	2.4	2.7	3.0	0.8	0.9	1.0	1.1	1.3	1.4	1.5	1.6
Company E	2.4	2.7	3.0	3.3	0.9	1.0	1.1	1.2	1.4	1.5	1.6	1.7
Company F	2.7	3.0	3.3	3.6	1.0	1.1	1.2	1.3	1.5	1.6	1.7	1.8
Company G	3.0	3.3	3.6	3.9	1.1	1.2	1.3	1.4	1.6	1.7	1.8	1.9
Company H	3.3	3.6	3.9	4.2	1.2	1.3	1.4	1.5	1.7	1.8	1.9	2.0
Company I	3.6	3.9	4.2	4.5	1.3	1.4	1.5	1.6	1.8	1.9	2.0	2.1
Company J	3.9	4.2	4.5	4.8	1.4	1.5	1.6	1.7	1.9	2.0	2.1	2.2
Company K	4.2	4.5	4.8	5.1	1.5	1.6	1.7	1.8	2.0	2.1	2.2	2.3
Company L	4.5	4.8	5.1	5.4	1.6	1.7	1.8	1.9	2.1	2.2	2.3	2.4
Company M	4.8	5.1	5.4	5.7	1.7	1.8	1.9	2.0	2.2	2.3	2.4	2.5
Company N	5.1	5.4	5.7	6.0	1.8	1.9	2.0	2.1	2.3	2.4	2.5	2.6
Company O	5.4	5.7	6.0	6.3	1.9	2.0	2.1	2.2	2.4	2.5	2.6	2.7
Company P	5.7	6.0	6.3	6.6	2.0	2.1	2.2	2.3	2.5	2.6	2.7	2.8
Company Q	6.0	6.3	6.6	6.9	2.1	2.2	2.3	2.4	2.6	2.7	2.8	2.9
Company R	6.3	6.6	6.9	7.2	2.2	2.3	2.4	2.5	2.7	2.8	2.9	3.0
Company S	6.6	6.9	7.2	7.5	2.3	2.4	2.5	2.6	2.8	2.9	3.0	3.1
Company T	6.9	7.2	7.5	7.8	2.4	2.5	2.6	2.7	2.9	3.0	3.1	3.2
Company U	7.2	7.5	7.8	8.1	2.5	2.6	2.7	2.8	3.0	3.1	3.2	3.3
Company V	7.5	7.8	8.1	8.4	2.6	2.7	2.8	2.9	3.1	3.2	3.3	3.4
Company W	7.8	8.1	8.4	8.7	2.7	2.8	2.9	3.0	3.2	3.3	3.4	3.5
Company X	8.1	8.4	8.7	9.0	2.8	2.9	3.0	3.1	3.3	3.4	3.5	3.6
Company Y	8.4	8.7	9.0	9.3	2.9	3.0	3.1	3.2	3.4	3.5	3.6	3.7
Company Z	8.7	9.0	9.3	9.6	3.0	3.1	3.2	3.3	3.5	3.6	3.7	3.8



The power of RIMS:

- Corrective actions with automated emails & manager verification
- Employees sign off on their own corrective actions & add attachments
- Unlimited number of attachments per incident
- Approval & rejection workflow ensures managers review incidents for accurate & complete details
- OSHA 300 logs automatically generated based on injury data
- Scorecard reports for comparing incident rates by location
- Key Points Report provides incident summaries based on various filters such as date, location, those involved, incident type, etc
- Save contractor details for auto-populating data fields
- Track investigations and assign investigation leaders
- Use a color-coded risk matrix to easily select potential and actual severity and likelihood ratings
- Spell check feature helps with accuracy